

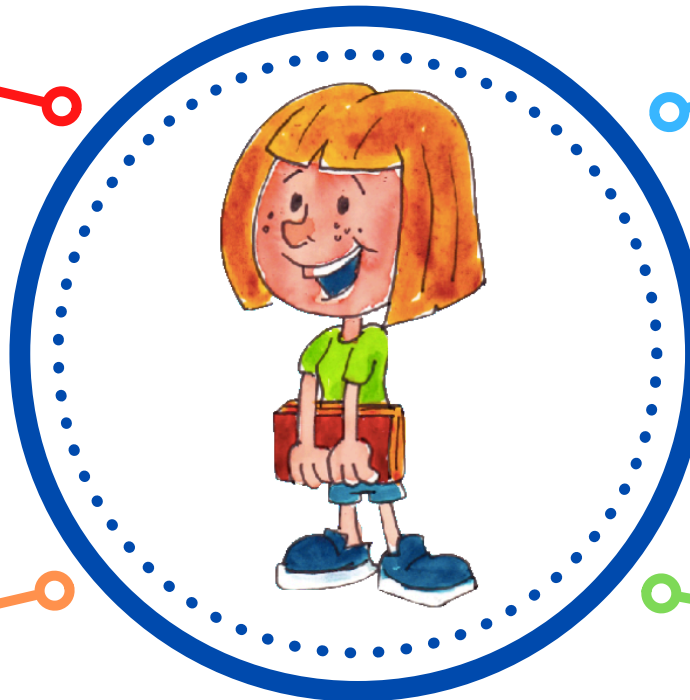
# WRITING BEYOND STRUCTURED LITERACY

At Cloverlea School writing is explicitly taught based on the age, stage and needs of LEGENDs. Writing programmes are to be fun and engaging for our LEGENDs to learn best. After LEGENDs have the foundation from structured literacy, writing programmes will focus on extending ideas with relevant details, improving vocabulary and transferring writing skills between different types of writing.

Writing experiences and contexts are chosen to be relevant and interesting for our LEGENDs.

LEGENDs learn how vital writing skills are and how they will use writing in their daily life.

Our writing programmes are based around our Localised Curriculum (learning important to the Manawatū).



We use writing contexts and purposes that relate to Te Ao Māori.

LEGENDs get clear specific next steps and chances to discuss their progress towards these.

Opportunities to talk first helps improve writing so we use Kagan Structures to enable all LEGENDs to share their ideas.

**Ārahi, Kairangi, Nahanaha, Manawaroa, Kotahitanga, Rae Pakari**

**LEAD, EXCELLENCE, ORGANISED, RESILIENCE, INCLUSIVE, DETERMINED**