

CLOVERLEA SCHOOL

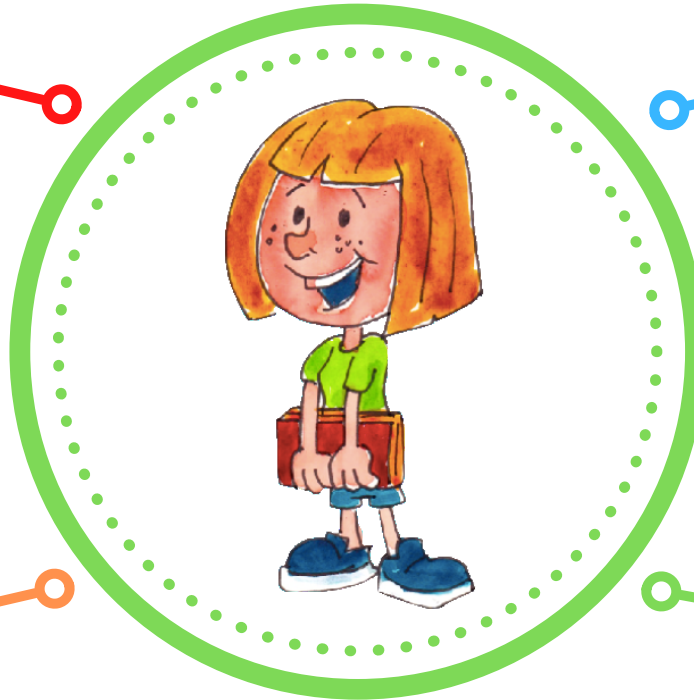
STRUCTURED LITERACY

At Cloverlea school we teach reading and writing through Structured Literacy approach. This is an approach where sounds and how they blend together to make words are taught explicitly. This approach develops foundational literacy skills that supports LEGENDs with both reading and writing. It benefits all learners - not just those struggling to develop these skills.

Structured Literacy is based on brain science research. Sounds are introduced in a set order as LEGENDs move up the stages.

We use flipped learning for Structured Literacy. LEGENDs watch a video about the sound/ blend of sounds before working on it with their teacher.

LEGENDs work with the teacher in small groups with LEGENDs that are working at same stage as them. They also have regular whole class workshops. A tuakana-teina approach means they can support one another.



At each stage some 'Heart Words' are introduced and we help LEGENDs be Determined to learn them off by heart because they come up a lot at their level and/or can be hard to sound out.

Teachers assess reading regularly and twice a year assessment is collected and analysed across the school, which helps us organise support groups.

The books LEGENDs read with their teacher focus on the new sound they are learning and include sounds they already know from earlier levels.

Ārahi, Kairangi, Nahanaha, Manawaroa, Kotahitanga, Rae Pakari

LEAD, EXCELLENCE, ORGANISED, RESILIENCE, INCLUSIVE, DETERMINED