

CLOVERLEA SCHOOL

SEESAW

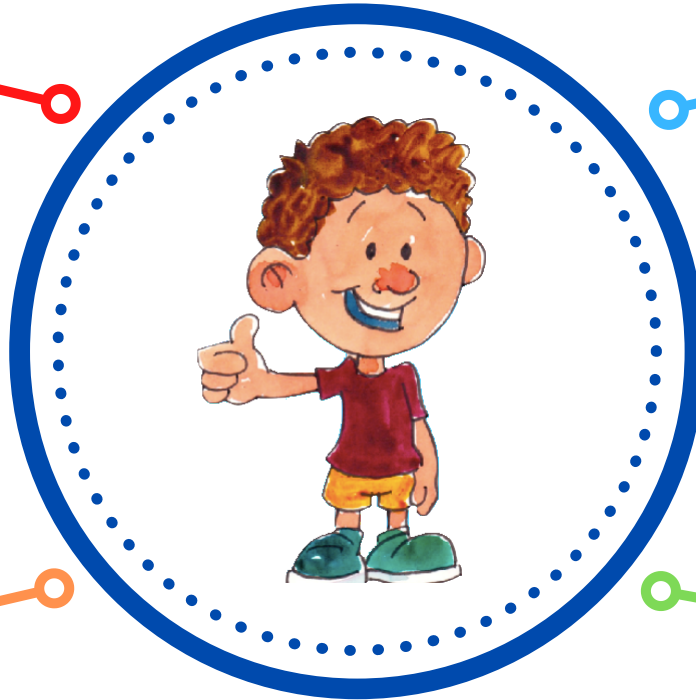
At Cloverlea school we use an app called Seesaw. Seesaw is our reporting system and is used to regularly show our LEGENDs' learning progress and to share successes.



When LEGENDs start at Cloverlea, they will get a Seesaw account which whānau have access to.

LEGENDs and teachers can create private posts that whānau can see, like and comment on.

There are two types of Seesaw Posts - LEGENDs in action posts so you can see what is happening during the day and reporting posts in Literacy and Maths each term instead of written school reports.



Teachers use Seesaw to send reminders and messages to parents and caregivers so you are up to date with class and school information.

Whānau and teachers can use Seesaw to send messages to each other.

For more in-depth information about how we use Seesaw visit: shorturl.at/kmJKZ

Ārahi, Kairangi, Nahanaha, Manawaroa, Kotahitanga, Rae Pakari

LEAD, EXCELLENCE, ORGANISED, RESILIENCE, INCLUSIVE, DETERMINED