

CLOVERLEA SCHOOL

PB4L

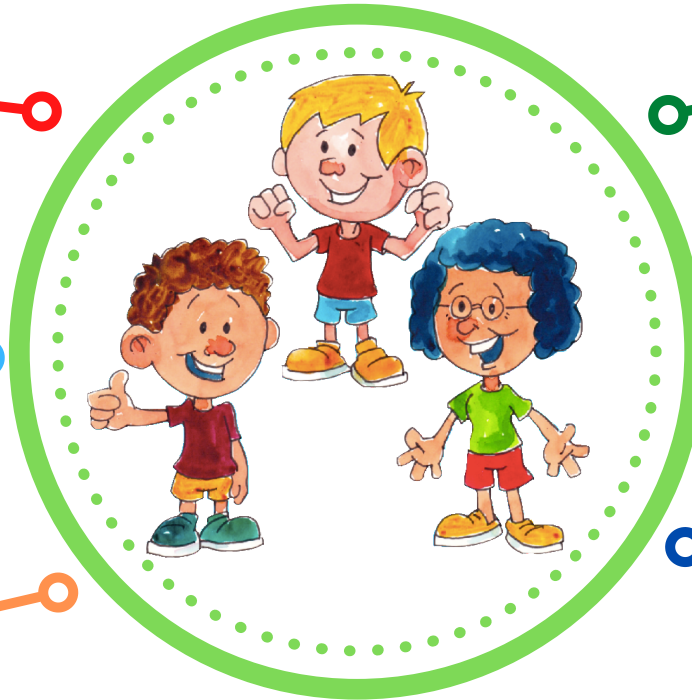
What is PB4L?

PB4L stands for Positive Behaviour for Learning. PB4L is a positive, consistent whole school approach to teaching and learning academic and life skills, which helps provide a positive and safe environment. Our "LEGEND" values have been developed since 2016 where the community shared their dreams and aspirations for Cloverlea learners. Each year, LEGEND becomes more and more visible across the school and is now at the centre of everything we plan and teach.

Everything we do at Cloverlea links back to being a Cloverlea LEGEND - how we speak, how we act and what we teach.

We view behaviour the same way as we view all other learning areas. If students show they don't know something, we teach it so we teach the behaviour we want to see.

Each value has a character designed by our students and we refer to Luke, Eva, Grace, Eli, Nia and Dan.



When we notice our students showing our values, we give verbal praise and acknowledge this with our golden tickets.

We teach our students how to show each value in different places such as in classrooms, at the pool, in the playground and out in the community.

LEGEND ensures our expectations are consistent across the school.

Ārahi, Kairangi, Nahanaha, Manawaroa, Kotahitanga, Rae Pakari

LEAD, EXCELLENCE, ORGANISED, RESILIENCE, INCLUSIVE, DETERMINED