

**CLOVERLEA SCHOOL**

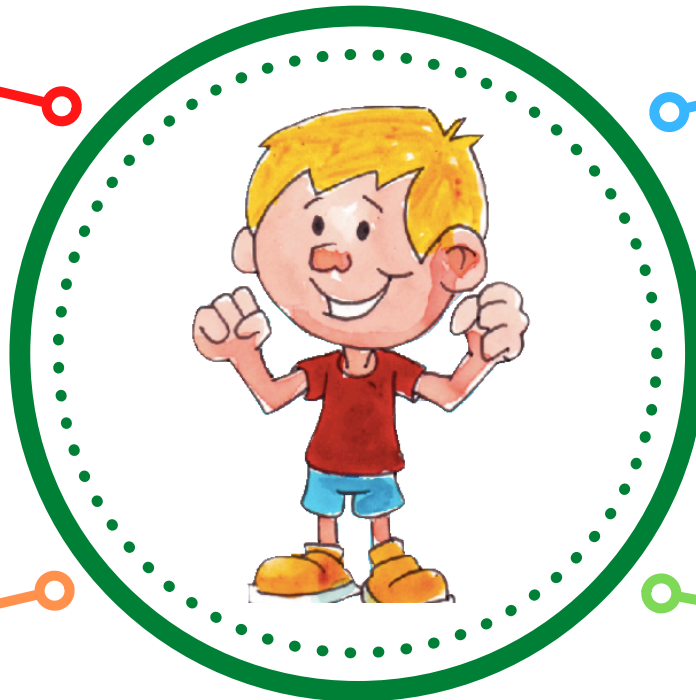
# **DIGITAL TECHNOLOGY**

At Cloverlea school we encourage our LEGENDs to see technology as a valuable tool that helps us communicate, learn and share our learning with others. Our LEGENDs are creators of digital content as well as consumers.

**LEGENDs have opportunities to design and develop digital outcomes from Year 1-6.**

**Each LEGEND learns to use digital technology safely and what to do if they access inappropriate content. LEGENDs and whānau sign a user agreement that explains responsibilities for using tech safely.**

**All LEGENDs learn how to be Nahanaha with our digital devices and how to look after them.**



**The Board of Trustees have provided a generous amount of money, alongside sponsorship from local businesses, towards purchasing iPads, chromebooks and other digital technology.**

**Digital Technology is used as a tool for our learning. It supports flipped learning**

**Duration of use of digital technology is age and stage appropriate.**

**Ārahi, Kairangi, Nahanaha, Manawaroa, Kotahitanga, Rae Pakari**

**LEAD, EXCELLENCE, ORGANISED, RESILIENCE, INCLUSIVE, DETERMINED**