

# CLOVERLEA SCHOOL

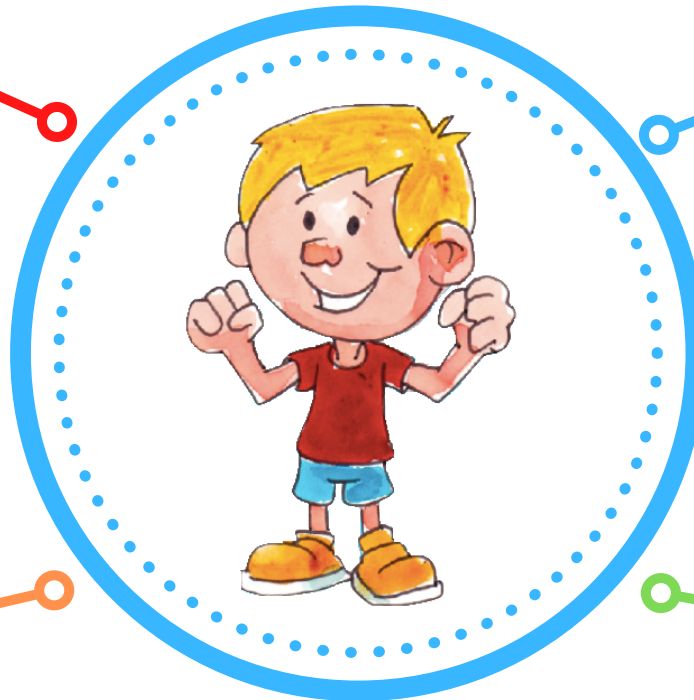
# BOYS CLASS

At Cloverlea School our boys class has been designed to help cater for some of our LEGENDS that may need more support with social, emotional, behavioural or academic learning. The class size is smaller, with between 12-15 LEGENDS. The kaiako in this class has extensive PB4L knowledge and proven success with learners that require more support.

All programmes are based around LEGEND in action - what LEGEND looks like in all settings within the school and how each student personally shows LEGEND.

Any conflict that may happen within the class or in the playground is discussed in detail, how the situation could be best handled and positive LEGEND messages are reinforced.

Planning is based on the interests within the class with lots of practical, hands on learning activities.



Each LEGEND is also connected to another senior school class to continue to develop positive relationships with other staff and with other LEGENDS their age.

Each morning begins with breakfast to further encourage positive social skills and a positive start to the day as well as practising our value of being inclusive.

Our boys class has smaller class numbers to ensure each LEGEND has an individual learning programme, with our LEGEND values at the core of all planning.

**Ārahi, Kairangi, Nahanaha, Manawaroa, Kotahitanga, Rae Pakari**

**LEAD, EXCELLENCE, ORGANISED, RESILIENCE, INCLUSIVE, DETERMINED**